

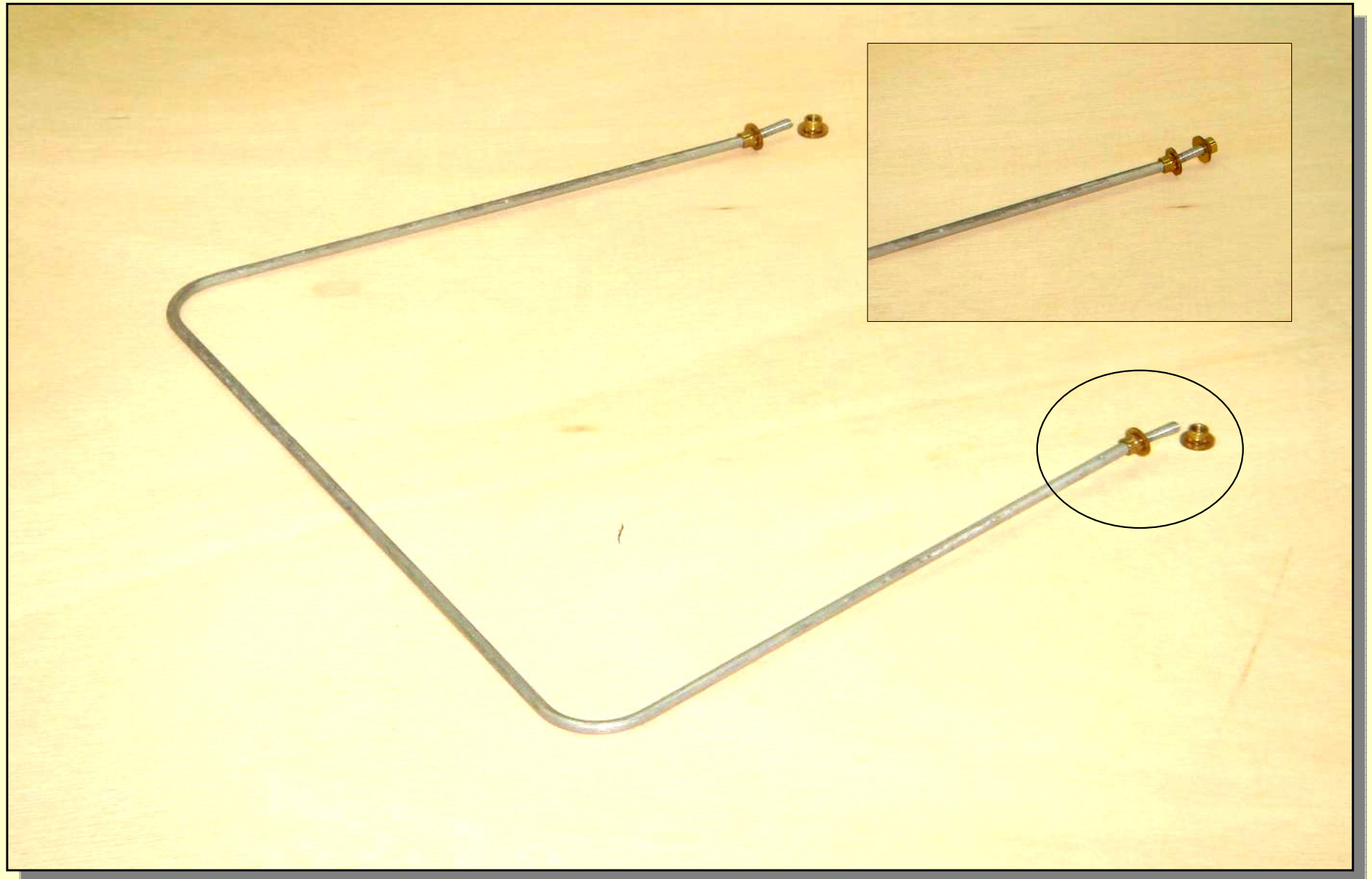
# **Assembly Instructions**

## **FILM DEVELOPING BOX**

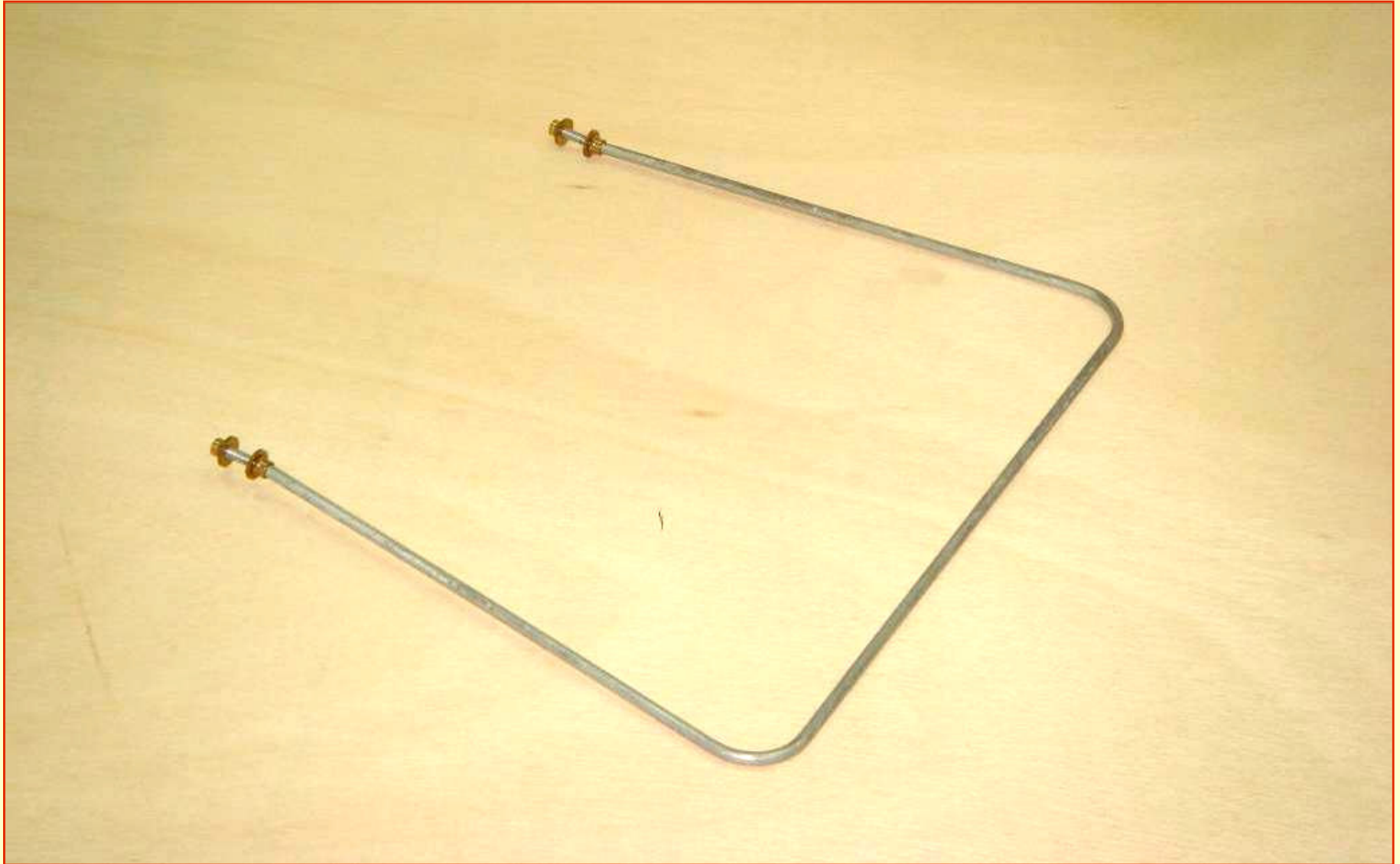
# Pre-Assembly Parts



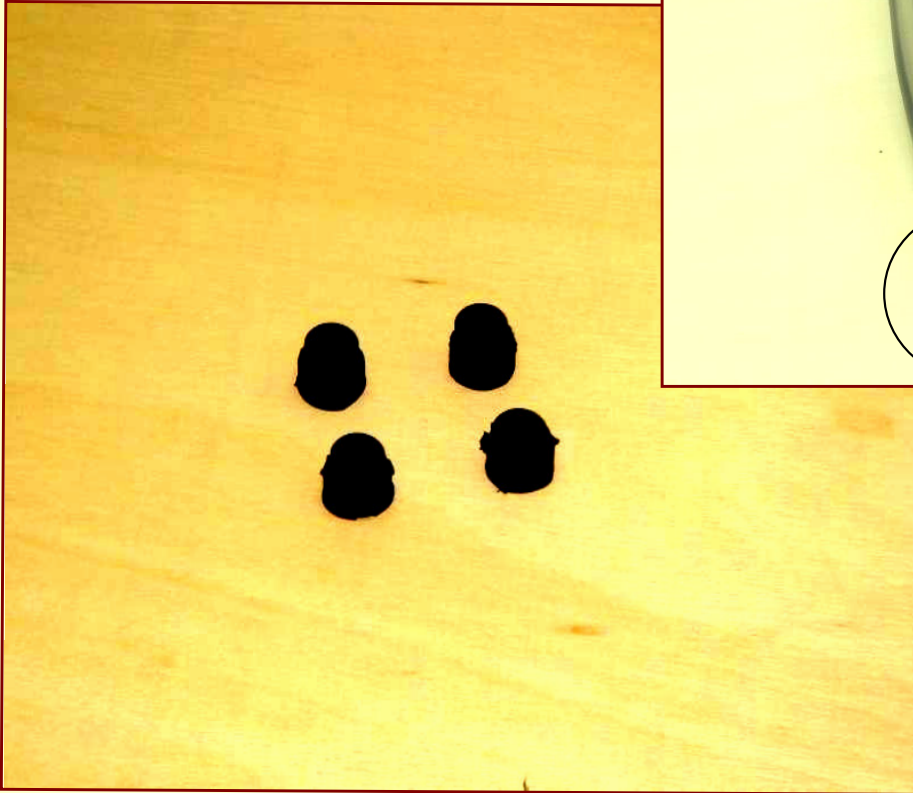
# Film Drying Bar



# Drying Bar Screws



# Rubber Legs

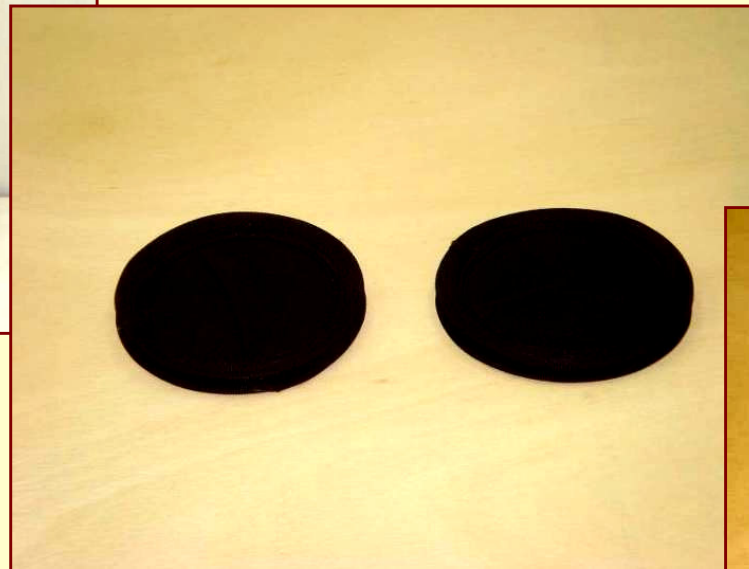




Filter



Sleeves



Developer/Fixer cups



# Main Body



# Step-By-Step Assembly Instructions

## Film Drying Bar



1. Insert the drying bar  
into the designated  
holes.





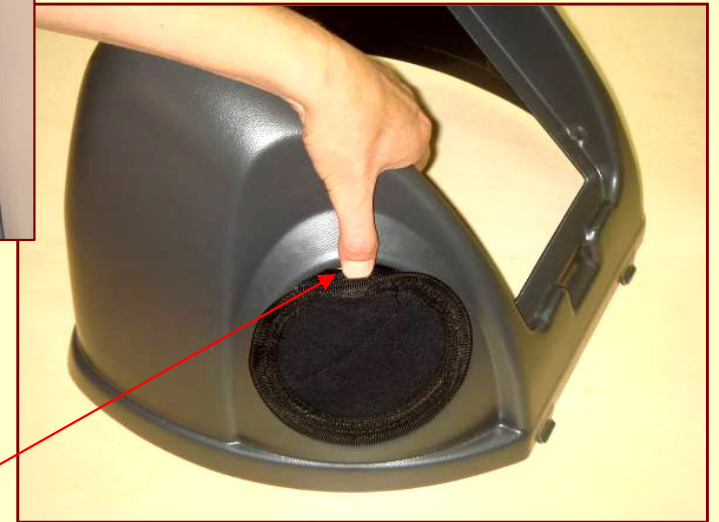
# Film Drying Bar

Underside of Base



2. Attach the drying bar to the base by firmly screwing on the enclosed screws on the underside of the box.

# Sleeve Assembly



3. Insert the sleeve groove onto the designated holes on the box, pressing the sleeve firmly into place.

# Main Body Assembly



4. Insert the two tabs on the main box into the two slots on the base. Firmly push the backside of the main body onto the locking tab back of the base.

To open the cover, place your fingers under the locking tab and lift.



# Cup Location



5. Place the 4 cups for the developing and fixing fluids in the base.





# Filter Insertion



6. Place the filter under the grooves on the upper body.



To remove the filter: push the filter tab upwards and then lift the filter out of its grooves.